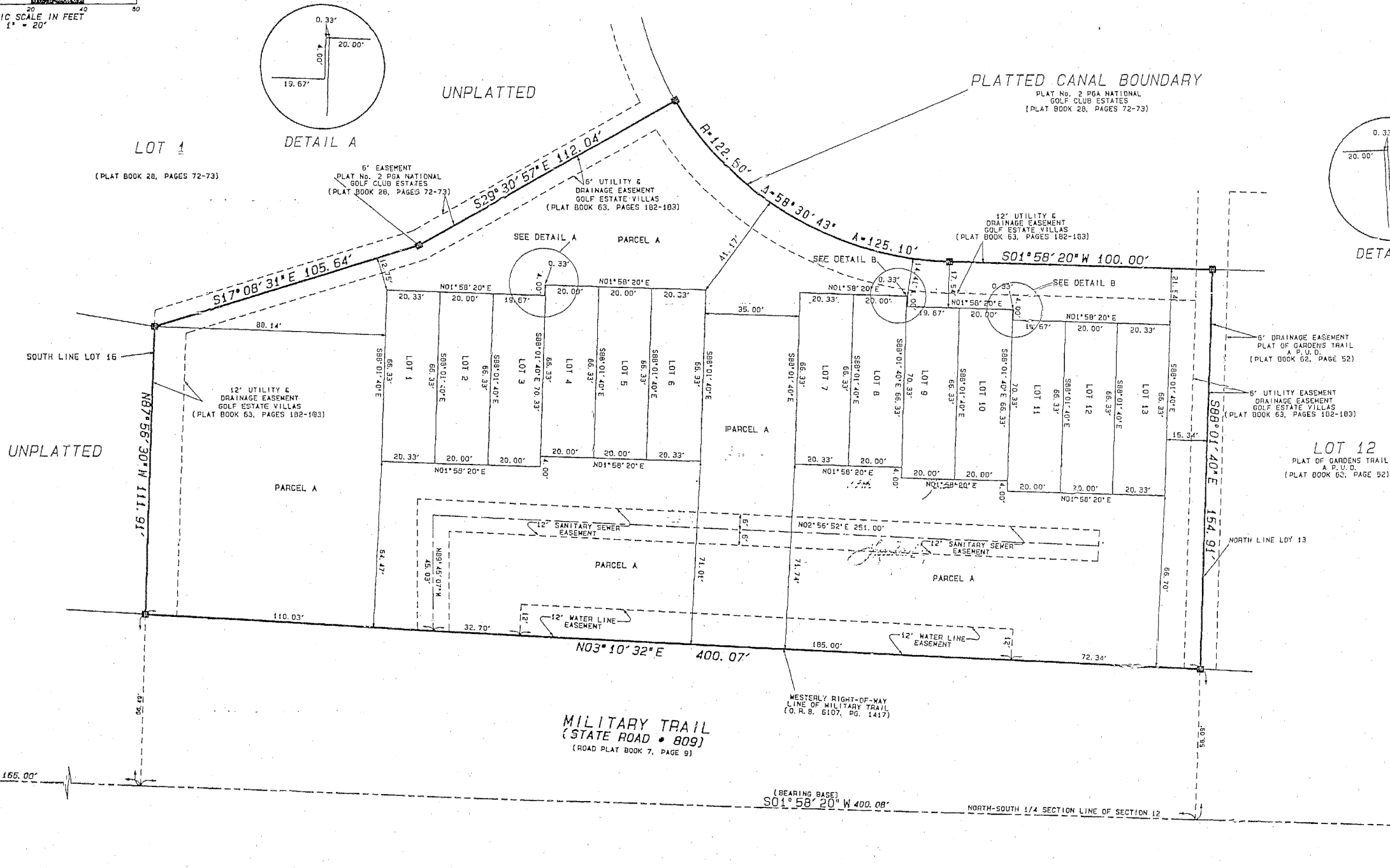
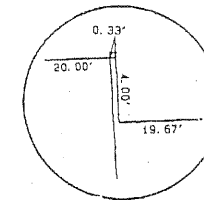
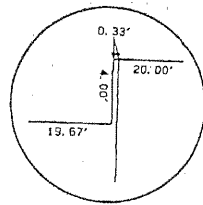
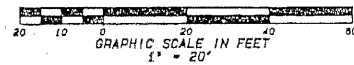


GOLF ESTATE VILLAS REPLAT

LYING IN SECTION 12, TOWNSHIP 42 SOUTH, RANGE 42 EAST, CITY OF PALM BEACH GARDENS, PALM BEACH COUNTY, FLORIDA, BEING A REPLAT OF TRACTS 1 THROUGH 15, OF THE PLAT OF GOLF ESTATE VILLAS, AS RECORDED IN PLAT BOOK 63, PAGES 182 AND 183, PALM BEACH COUNTY, FLORIDA, PUBLIC RECORDS.

JUNE 1998
SHEET 2 OF 2

THIS INSTRUMENT WAS PREPARED BY DAN V. DAILEY, P.S.M.
DAILEY AND ASSOCIATES, INC. 112 N. U.S. HWY. ONE
TEQUESTA, FLORIDA 33469



DAILEY AND ASSOCIATES, INC.
 SURVEYING & MAPPING
 112 N. U.S. HIGHWAY NO. 1
 TEQUESTA, FLORIDA 33469
 PHONE: (561) 746-8424